

info-project 16

And you can be so happy and love like a wasp!

Whose friends should go with wasp and Pink Panther for vacation? and where to go? and who is paying for the tickets?

and why orchid is also nervous? and who knows the easiest way to back home?

From the diary of Pink Panther...

Monday, 12.07.2009 *It was cold and windy day when I saw first time this poor guy from the second floor B building. Every morning he takes black coffee in the Rhizom coffee bar and in the evening he was meeting there with his beautiful girlfriend. And it looks that they had very strong relationship, but a little bit boring...so why I was so fascinated of him?*

But let's start from beginning...

Deterritorialization:

Desestabilizes spatial boundaries or increase internal heterogeneity.

Concept of territorialization plays a **synthetic role**, through the **permanent articulations produced by this process that the whole emerges from its parts and maintains its identity once has emerged.**

Territorialization:

Process that **define or sharpen spatial boundaries** of actual territories.

Non-spatial process which increase internal homogeneity of an assemblage.

Reterritorialization:

Establish a new relationship, a new process, a new interaction, a new interlinking, provide a new concept, re-define, re-configure, re-combine, differentiation the role.

One of the example on which Deleuze explain the process **Deterritorialization & Reterritorialization** is the:

Beautiful story... "Orchid and the Wasp"

1. Where is the beginning of the process?

2. Beautiful story-What kind of process is happened between them? What is the potential of this process?

3. Why Orchid? Why Wasp? APARALLE EVOLUTION of two beings that have absolutely nothing to do with each other?

Nothing happend? Or something happened because of assemblages?

5. What kind of order do they have? What kind of order do they need? (Abstract Machine? +Plaine of Consistency?)

4. What does it mean for architecture...?

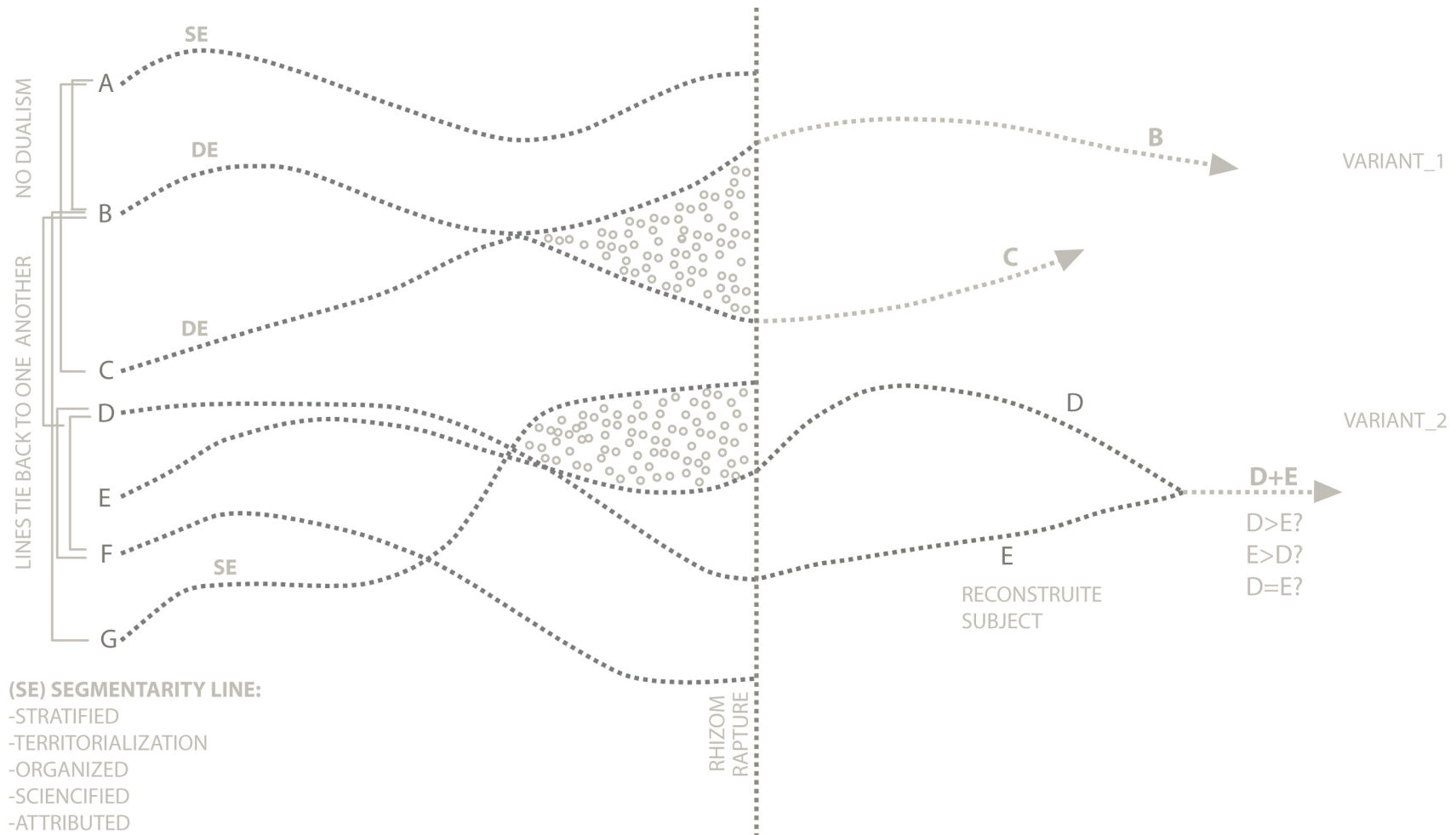
1. Where is the beginning of the process?

A rhizom may be broken but it will strat up again on one of its old lines, or a new lines.

Every rhizom contains **lines of segmentarity** according to which it is stratified (**strata=method of selection**), territorialized, organized, signified, attributed, as well **lines of deterritorialization** down which it constantly flees.

There is a rupture in the rhizom whenever segmentary lines expode into a line of flight, but the line of the flights is part of the rhizom. Those lines always tie back to one another. That is why one can never posit **dualism**.

You make a rupture, drawn a line of flight, yet there is still a danger that you will reencounter organizations that restratify everything, formations that restore power to a signifier.



Beautiful story...What kind of process is happened between them? "Orchid and the Wasp"

Symbiosis of plants and pollinating objects (wasp and the orchid): **relations of exteriority between self-subsistent components** that may become obligatory during the course of co-evolution.

Allows to consider **biological organism as assemblages**: Relations may be **contingently obligatory** (co-evolutionary history of 2 species) despite tight integration between component organs, relations between them are not logically necessary, but a historical result of their close co-evolution). Heterogeneity of components (ecosystems are assemblages of thousands different plants and animal species), but not the species themselves; natural selection homogenize their gene pools) as a variable (may take different values).

There is an orchid which attracted wasp(which transfer pollen).

*The most important fact about this is not that the orchid attracted wasp by normal attractive way of providing nectar but they passing as a **famele wasp**. The male wasp is thinking that orchid is a female wasp(SUTER-COPULATION).The wasp is frustrated so she start to looking another female wasp
PROCESS:Fly off- 1st orchid got pollen-frustrated-find 2ed orchid-2 orchid got pollen(the process transfer from 1st orchid to 2ed orchid*

<http://www.youtube.com/watch?v=-h8I3cqp9nA>

The orchid deterritorialized by forming an image, a tracing of wasp but the wasp redeterritorialized on that image. The wasp is nevertheless deterritorialized, becoming a piece in the orchid's reproductive apparatus. But it redeterritorializes the orchid by transporting its pollen.

It could be said that the orchid **IMITATES** the wasp, **REPRODUCING** its image in signifying fashion(MIMESIS)

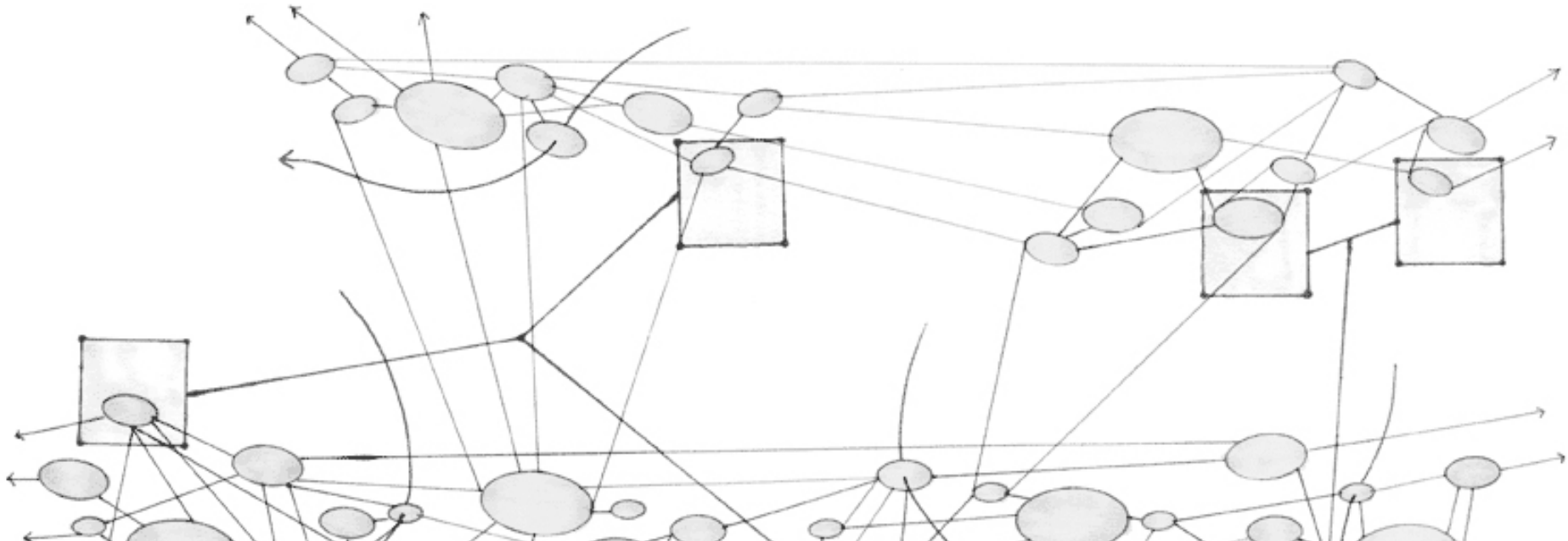
Mimesis (greek. Mimetés) is a critical and philosophical term that carries a wide range of meanings, which include: imitation, mimicry
But this is true only on the level of STRAT.

3. *What is the potential of this process? What is really happend? What is the process?*

NOT IMITATION NOR RESEMBLANCE but **CAPTURE OF CODE**,surplus value of code, an increase in valence, a **VERITABLE BECOMING**

BECOMING- wasp of the orchid and **BECOMING**-orchid of the wasp

The two becoming **INTERLINK** and form relays-pushing the deterritorialization futher.



...because of assemblages? aparallel evolution? veritable becoming?

Assemblage Theory:

Ontology of assemblages: Contains **differently scaled individual singularities**

Each individual is unique

Identity of assemblage is product of a process of

a) Stabilization b) Destabilization

Territorialization Deterritorialization

Coding Decoding

The distinction to be made is not between exterior and interior, which are always relative , changing and reversible but between different types of multiplicities that coexist, interpenetrate, and change places – machines, cogs, motors and elements that are set in motion at a given moment, forming an **assemblage** of productive statements: “I love you”



When the wasp met the Pink Panter ☺

APARALLE EVOLUTION =if the Pink Panter imitate the pink? or if she paints the world in pink on pink?

Becoming-world =becomes imperceptible, asignifying, makes its rupture,its own line of light

*When the wasp was to shy and completely lost...
so, what to do?*

1.ALWAYS FOLLOW THE RHIZOM

2.CONJUGATE DETERRITORIALIZATION FLOWES

3. WRITE

4.FORM A RHIZOM

6.INCREASE YOUR TERRITORY BY DETERRITORRIALIZATION

7.EXTEND THE LINE OF LIGHTS TO THE POINT WHERE IT BECOMES AN ABSTRACYT MACHINE COVERING THE ENTIRE PLANE OF CONSISTENCY

Three monts later...



*When a wasp is lost in a city and when an orchid wants to know where is a Post Office?...hmmmm?
When the wasp wants to talk WITH the orchid and when they want to get to another layer?
When the wasp has an affair WITH Pink Panter...hmmm
When the wasp and the orchid go out from the black box? and
Where is the Pink Panter?*

1. So what is the problem of (De-terri-to-ria-lization)?

The boring story about the wasp and the orchid.....?!hmmmm

Symbiosis of plants and pollinating objects (wasp and the orchid): **relations of exteriority between self-subsistent components** that may become obligatory during the course of co-evolution.

Allows to consider **biological organism as assemblages**: Relations may be **contingently obligatory** (co-evolutionary history of 2 species) despite tight integration between component organs, relations between them are not logically necessary, but a historical result of their close co-evolution).

Heterogeneity of components (ecosystems are assemblages of thousands different plants and animal species), but not the species themselves; natural selection homogenize their gene pools) as a variable (may take different values).

1. Is there an abstract machine which composes a story about the orchid and the wasp in another meaning?

2. How can we embrace this image?

3. What will happen if we capture another imitation? How to avoid imitations?

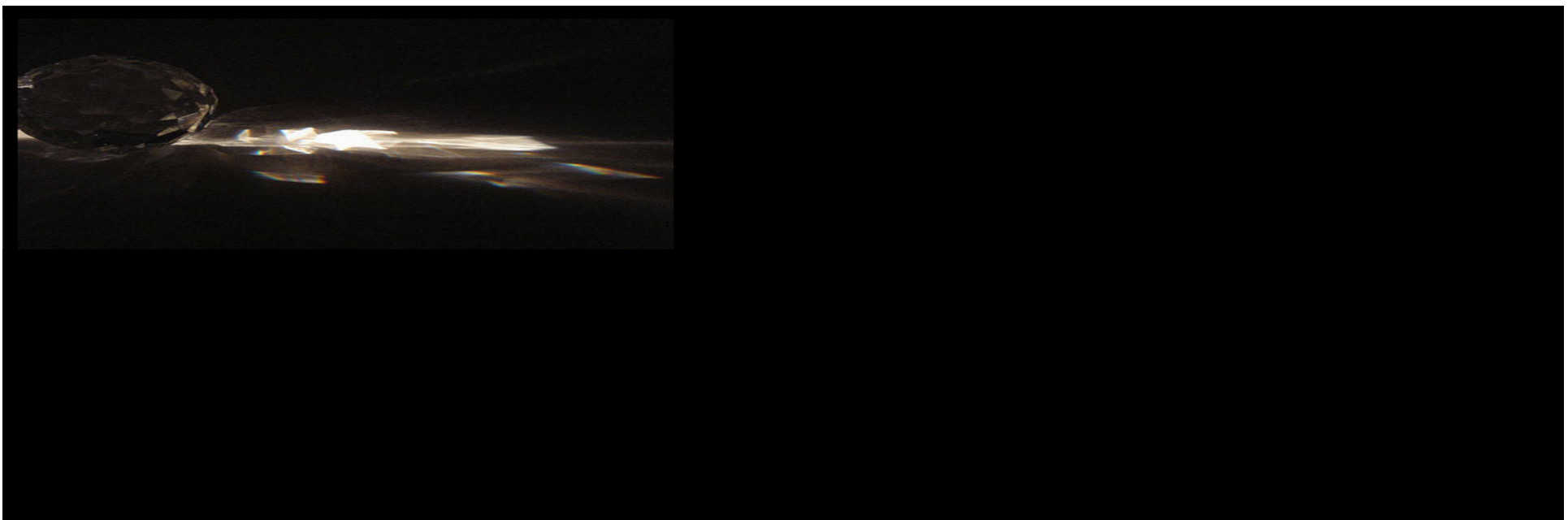
4. What kind of process is happening between them? What is involved in this process?

5. APARALLE EVOLUTIO ? so, do not they have nothing to each other? How can we think beyond the dualism?

6. How can we think beyond the "boring" story about ours stories?

7. And where is the Order?

8. And where is the Architecture?



1. How can we embrace this image?

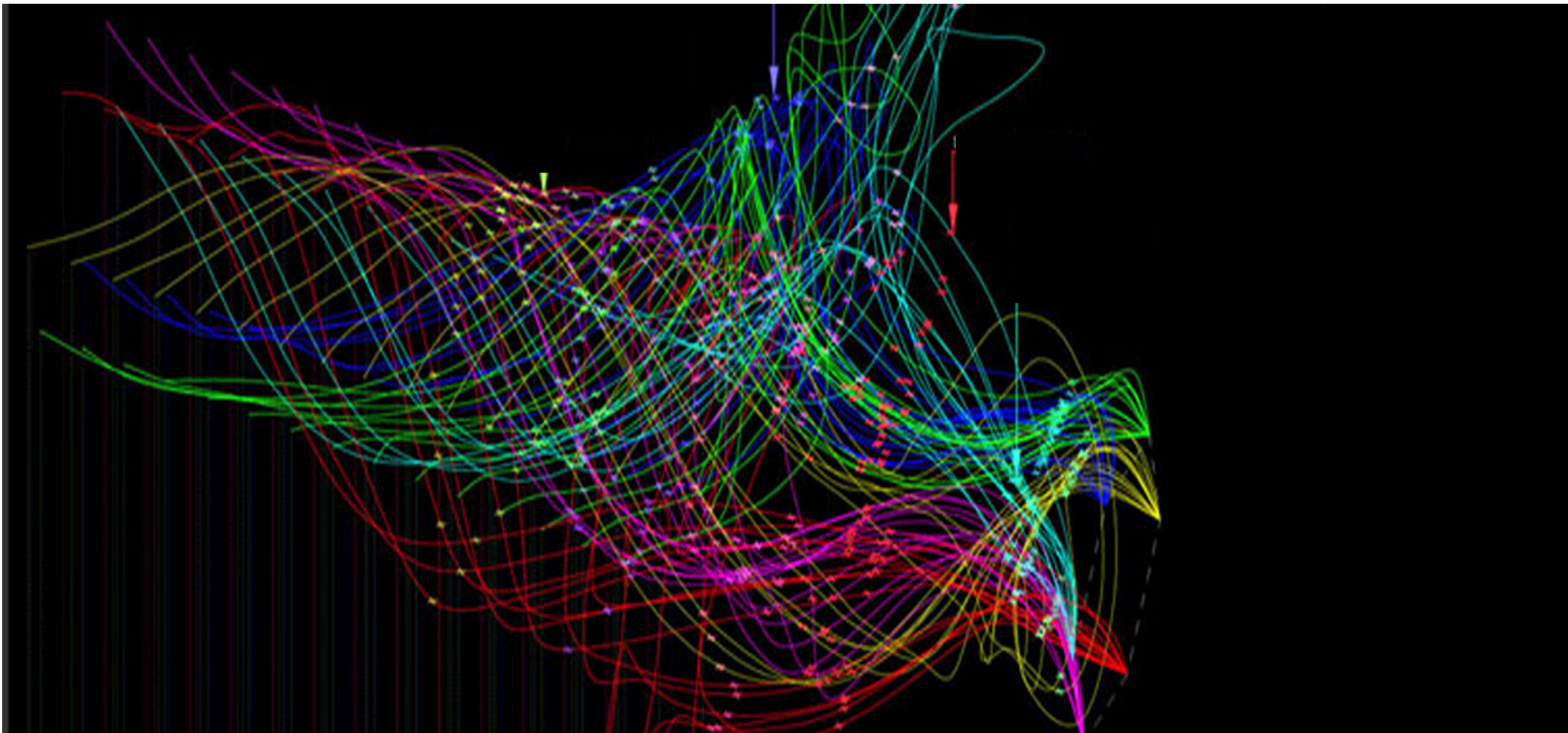
2. What is the position of genetic code and all dependence which we project in biology?

3. Can we transfer the feeling from one object to another directly? If not, why? read a little bit moreabout this!

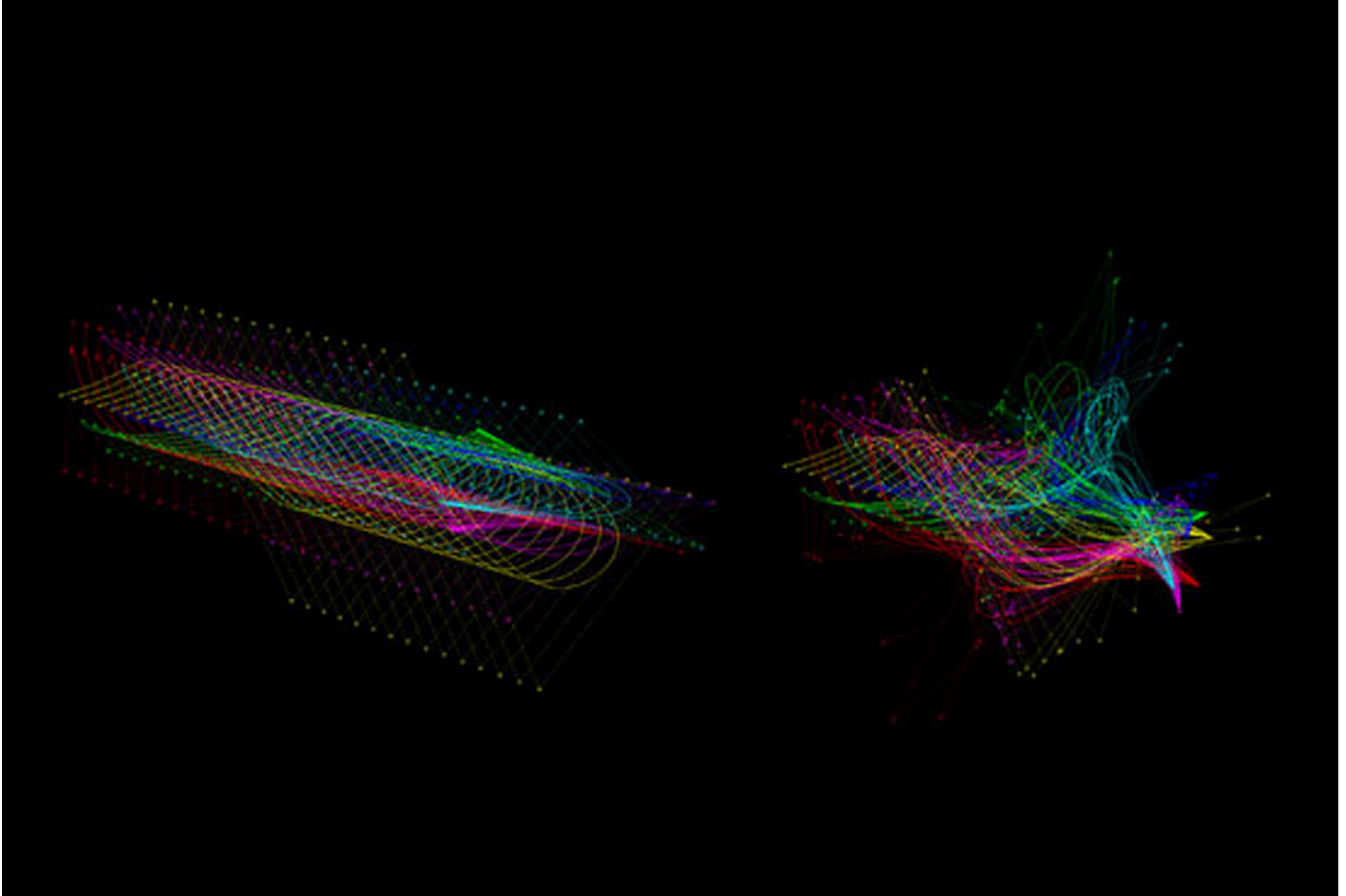
Sometimes is it hard to transfer the logic to rational sense or even it's not possible, so why we try to do it? Why we want to flat the Rhizome? Still do not know? What for? And still there is a lot of possibilities!

Evolutionary schemes would no longer follow models of arborescent descent going from the least to the most differentiated but instead a rhizome operating immediately in the heterogeneous and jumping from one already differentiated line to another.

(APARALLE EVOLUTION of two beings that have absolutely nothing to do with each other...?)



What is the potential of this process? What has really happend? How to find the distance to the story?How to make the code less rigid?
NOT IMITATION NOR RESEMBLANCE but **CAPTURE OF CODE** and **VERITABLE BECOMING!**
BECOMING- wasp of the orchid and **BECOMING-**orchid of the wasp
The two becoming **INTERLINK** and form relays-pushing the deterritorialization futher.



How to find the distance to the story? How the wasp and the orchid can get to another layer? coding plan!

The orchid and the wasp is going to nowhere...When we start to speak about movement? And stabilization?Where is the identity?

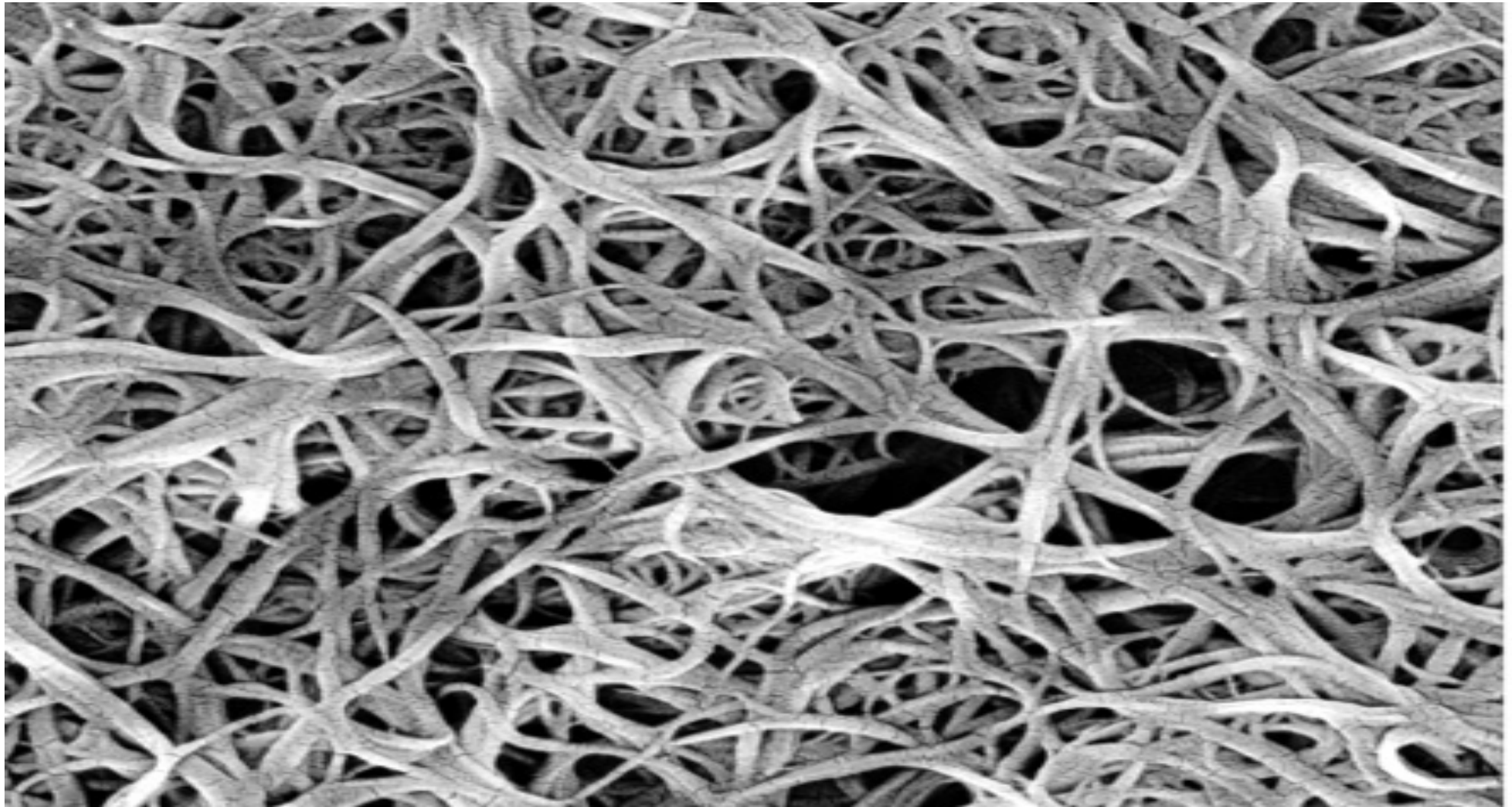
The wasp meets the Pink Panter (they integrated somehow and somewhere(De-te-rri-to-ria-lization) and then start a new concept(Re-te-rri-to-ria-lization) Double Atticulation and....

...and the story about the wasp and Pink Panter starts : so why do we always want to have the object in the end?

Why the (De-te-rri-to-ria-lization) could be so abstract?

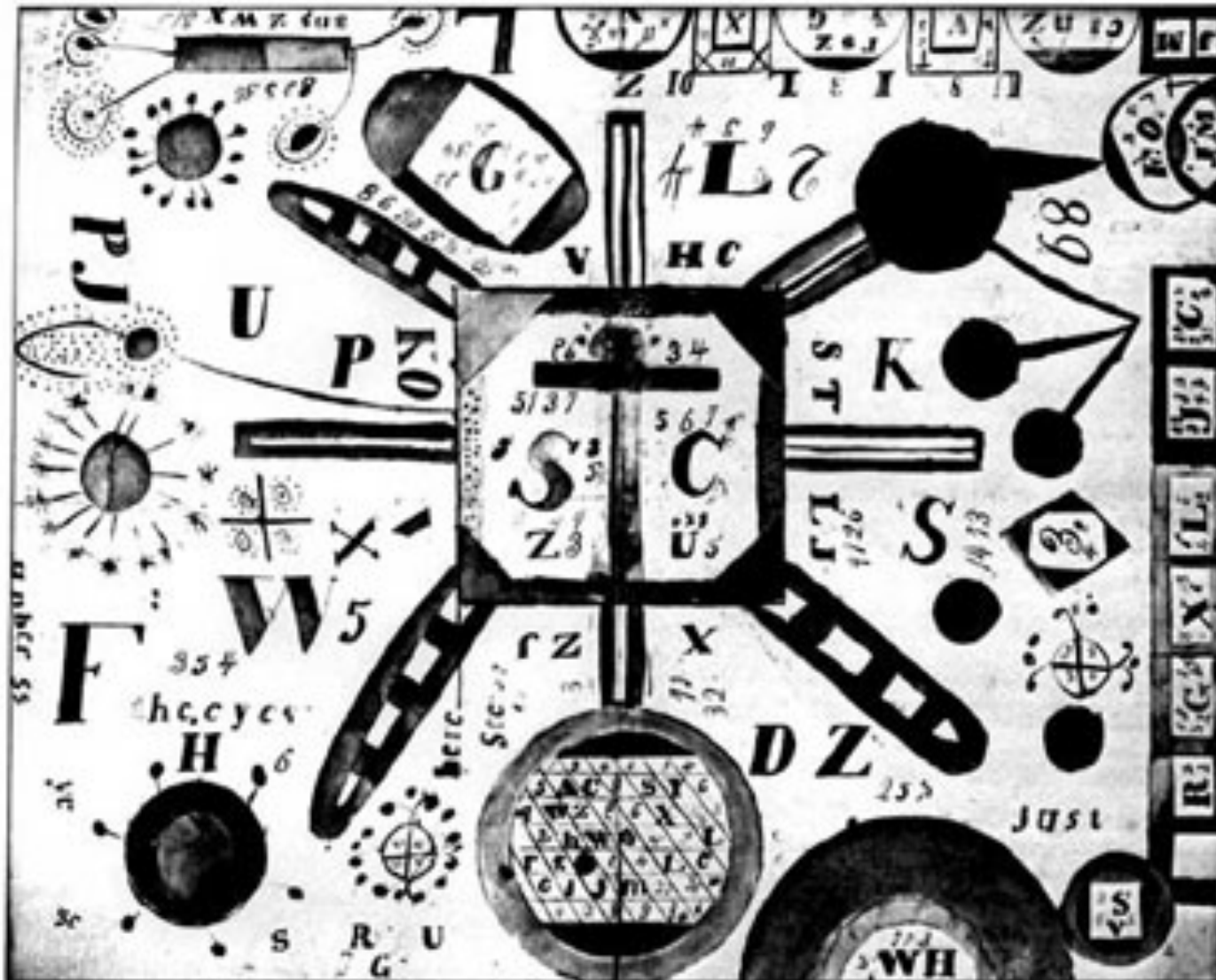
So if we know this abstract machines - we know the mechanism, can we speak WITH architecture?

I believe that we are the part of the game called ,“Architecture“ and I am wondering what we can get from this world ,which we try to create so hard in every single day in every single project?



So what does it mean in Architecture? ..And how to get to the Post Office?
What is the role of this phenomenal (wasp&orchid) in social environment, in public spaces, in literature, in our habits?
How to find better tools to design in a better way

...to get to post office?



Monday, 12-07-2010 a lot of things change from 12.07.2009

The wasp propose me a married... we change the apartment...a lot of fights...yhhh!

Sometimes he is so stubborn...

and I was thinking... well we will see what will happend...

This is place for your picture.....

thank you